

BONNEY LAKE FOOD BANK

EMERGENCY
RELOCATION

+

COVID19
IMPACT
RESPONSE



A LETTER FROM THE EXECUTIVE DIRECTOR:



COVID19 has brought with it some immediate and significant challenges in the realm of food security. But with great challenge, comes great opportunity for resilience and change. As we continue to navigate the tremendous impacts of COVID19, we are looking to our community for partnership in our mission to combat hunger in our area. We are only at the beginning of an uphill battle, with numbers increasing beyond 200%. This exceeds both the state and county averages in the same timeframe.

The Bonney Lake Food Bank has seized opportunity to show up for our community and has rewritten the narrative of how food banks can be operated. By identifying the two main roadblocks to food access, transportation and communication, we have created a more equitable playing field for a population that has felt the impact of COVID19 the most deeply. This is a critical time, and there is no better time for trailblazing efforts.

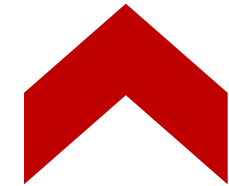
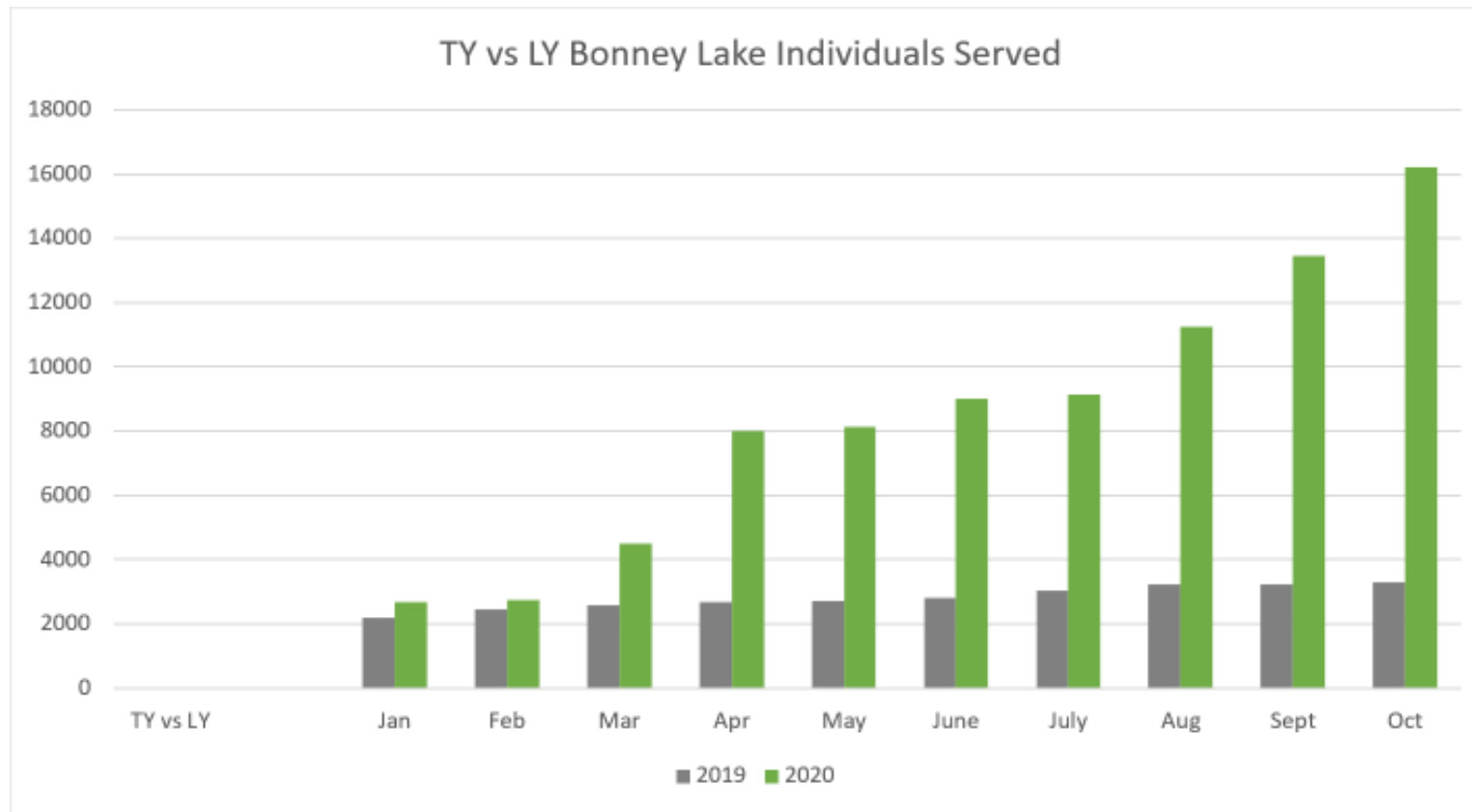
As we look at to the future, it is crucial that we secure funding to not only relocate our operations to a larger and safer facility, but to build a sustainability model for the increased costs of an operation over 5 times the size it was just 8 months ago.

With a distribution of our increased size, we have become a critical role in food security in East Pierce. We invite you to support our efforts to continue to provide the safety net our area so greatly needs to weather the storm.

-Stacey Crnich

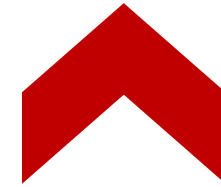
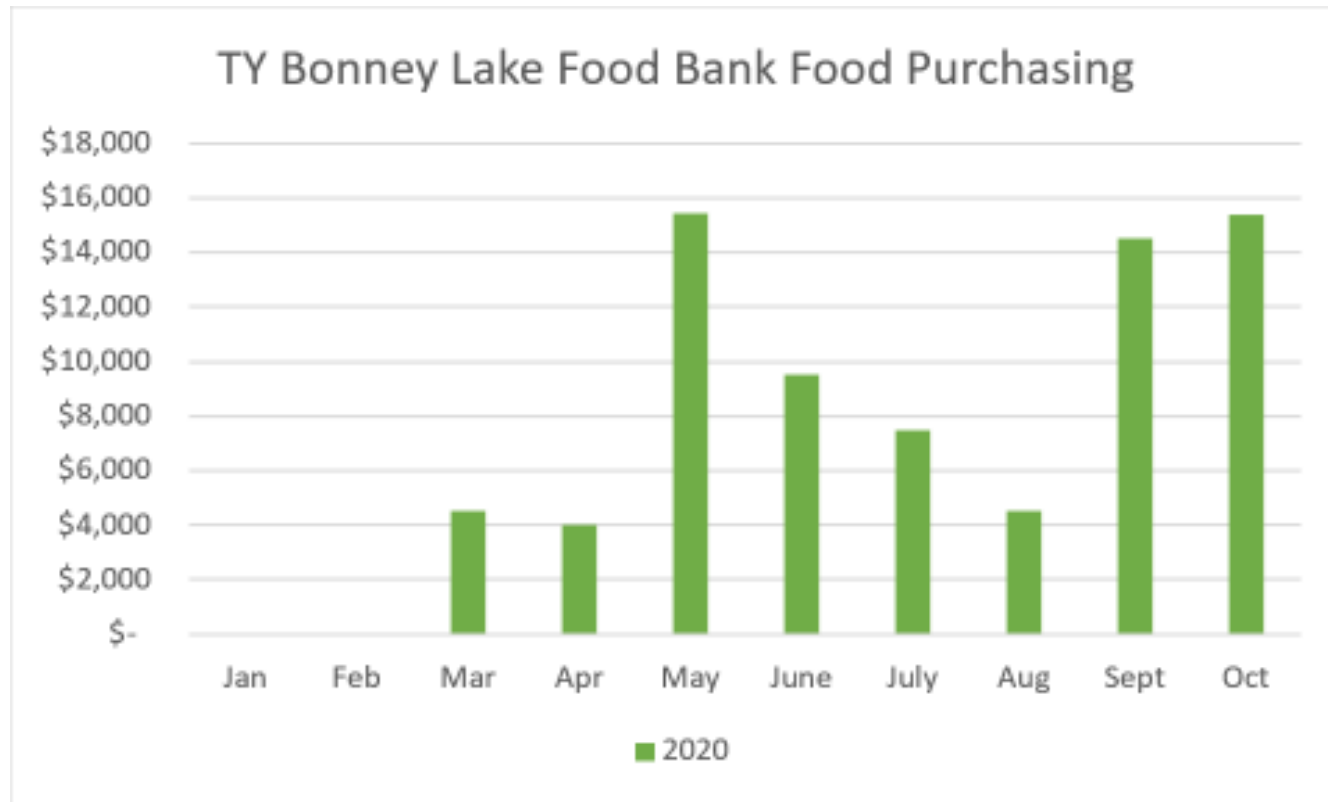
Executive Director . Bonney Lake Food Bank

INDIVIDUALS SERVED



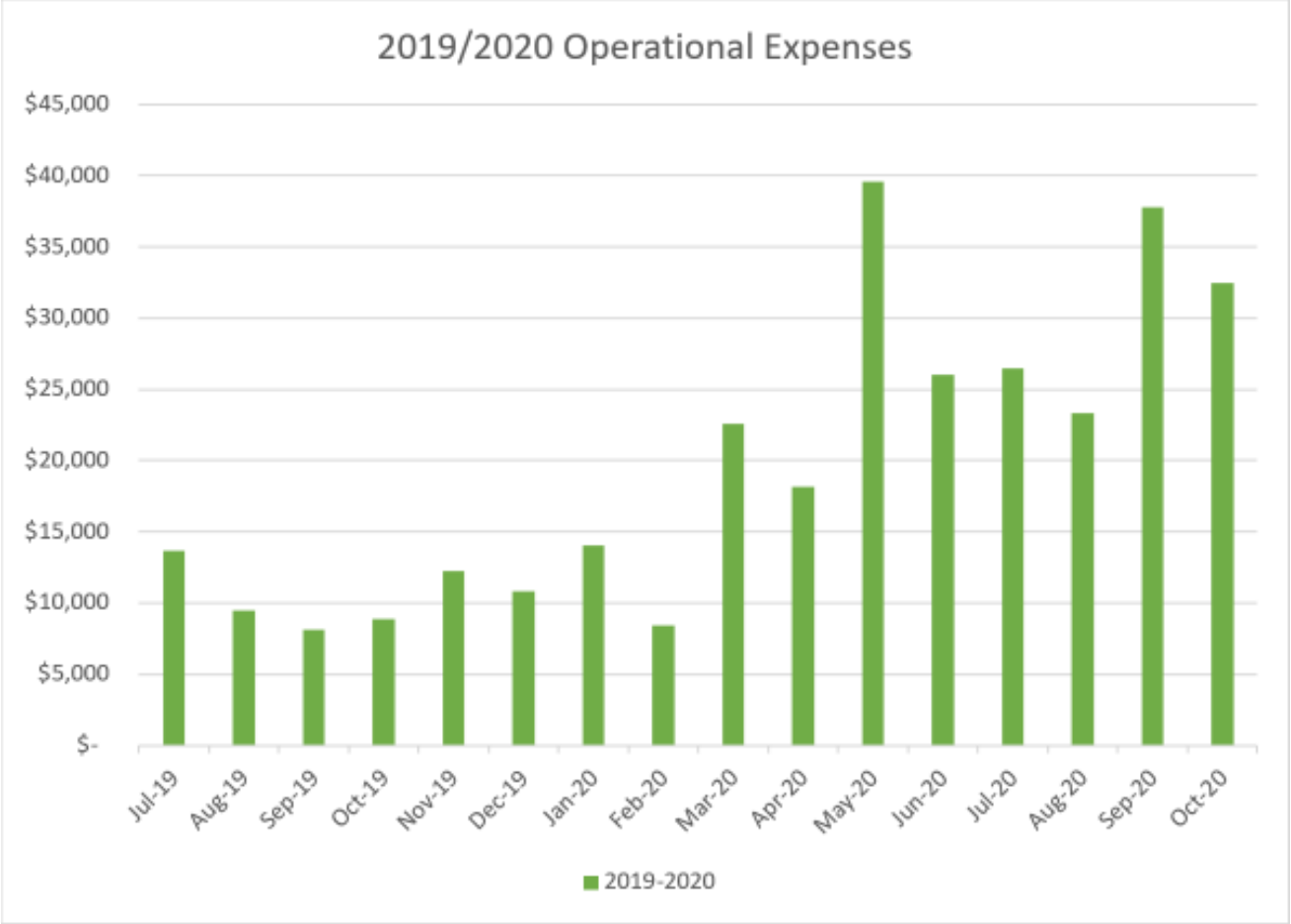
- *October we hit a 400% increase over LY
- *250%+ increase since COVID19 onset
- *Pierce County average is at 55% for Q2/Q3

PURCHASED FOOD



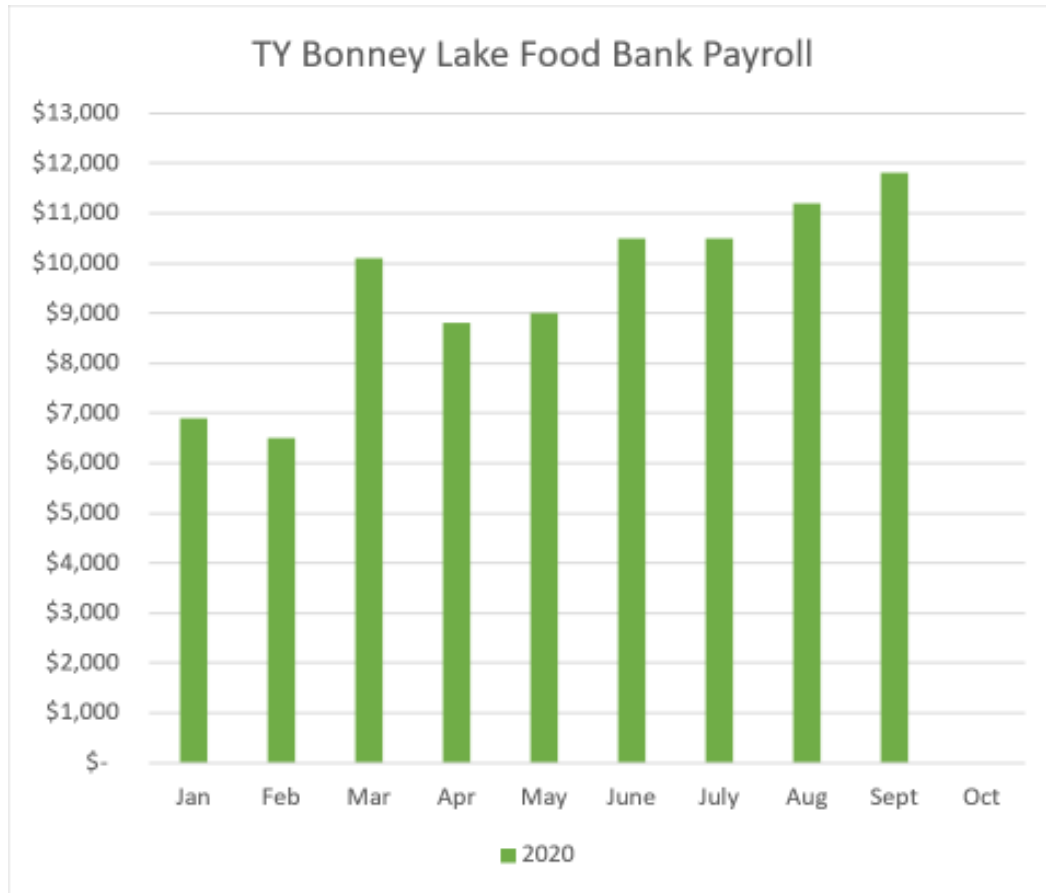
BLFB has never purchased food prior to COVID19. YTD we have purchased over \$75,000

OPERATIONAL EXPENSES



311% Increase In Average Monthly Expenses Since COVID19 onset

PAYROLL FIGURES

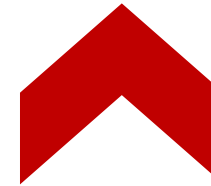


Our current payroll hours are at a 70% increase since COVID19 onset.

Note: We are not trending the same increase here because of the support of 7 Washington National Guard members since March 2020. Once the mission is over in December, we will potentially need to double our payroll to offset this loss of support.

PIERCE COUNTY NUMBERS

Pierce County Individuals Served Q2/Q3			
	2019	2020 % +/-	
Q2	344500	530280	53.9%
Q3	289900	406800	40.3%
BLFB Individuals Served Q2/Q3			
	2019	2020 % +/-	
Q2	8500	24300	185.0%
Q3	9500	36300	282.0%



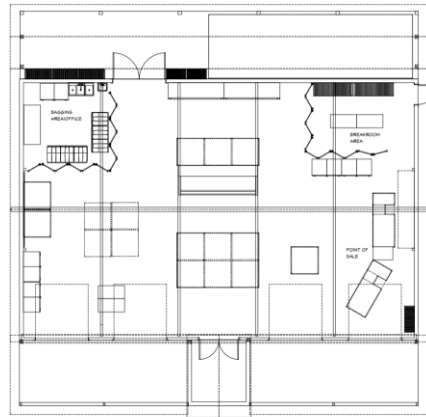
Our trend continues to outpace county numbers since COVID19 onset due to these key factors:

*identifying roadblocks to access (transportation and communication)

*increased need in surrounding cities where neighborhood foodbanks are not meeting demand with current capacity

THE PROBLEM: CAPACITY TO SERVE 200%+ MORE INDIVIDUALS

THE SOLUTION: THE MARKET



IMMEDIATE

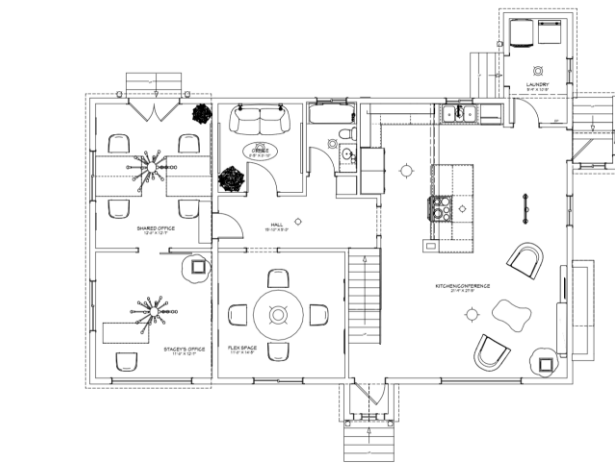
- Triple the amount of operating space compared to our current facility
- Socially distanced accommodating environment will allow for the safe return of volunteers
- Unincorporated Pierce County is ground zero for growing client base
- Easy access for running our rapidly expanding East Pierce delivery model

LONG TERM SUSTAINABILITY

- Future social enterprise for a retail fruit stand model

THE PROBLEM: SOCIAL SERVICE VOID – COVID RESPONSE

THE SOLUTION: THE FARMHOUSE



IMMEDIATE

- Leased office space for WIC, Pierce County Health, Social Service, and Mental Health Providers
- Job rehabilitation services
- Communal hub for multi-agency strategic planning

LONG TERM SUSTAINABILITY

- Lease terms for office spaces
- Facility rental for small events and workshops
- Catering kitchen

THE PROBLEM: SUPPLY CHAIN ISSUES + POOR FOOD QUALITY

THE SOLUTION: THE GREENHOUSE



IMMEDIATE

- 1900 Square feet of growing space for year-round crops
- Quality produce that meets gap in current supply and demand
- Socially distant volunteer opportunities

LONG TERM SUSTAINABILITY

- Community and youth engagement programs to manage farm
- Farm to Fork learning opportunities and fee-based classes offered to the community

COVID RESPONSE + RAPID INNOVATION



- Appointment Coordinator on call 7 days a week
- Self-service online grocery registration
- Stigma free white van delivery service
- Text broadcast communication system
- Drive thru crisis resource triage

